

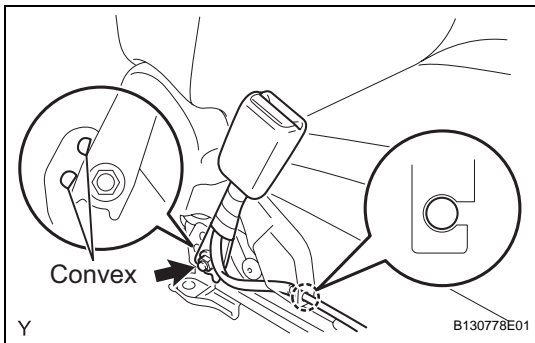
## INSTALLATION

### CAUTION:

Some of these service operations affect the SRS airbag system. Read the precautionary notices concerning the SRS airbag system before servicing (w/ Front Seat Side Airbag) (See page [RS-1](#)).

### HINT:

The procedure described below is for the driver side. Use the same procedure for both the driver and front passenger sides, unless otherwise specified.



### 1. INSTALL FRONT SEAT INNER BELT ASSEMBLY

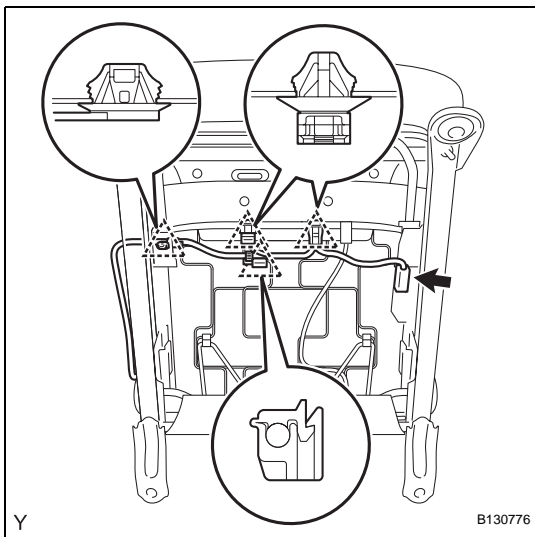
- (a) Install the front seat inner belt with the bolt.

**Torque: 42 N\*m (430 kgf\*cm, 31 ft.\*lbf)**

#### NOTICE:

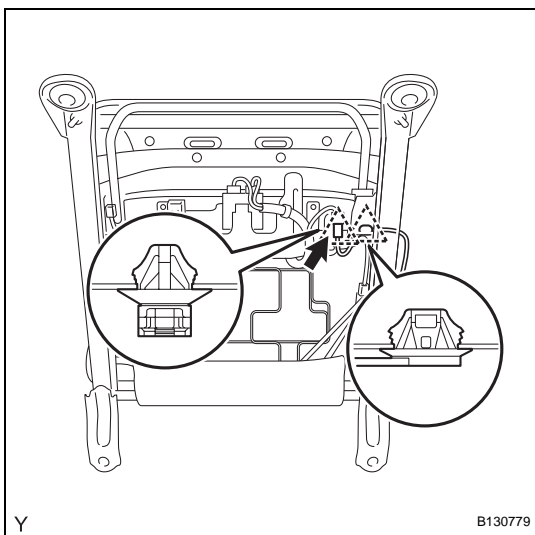
**Do not place the front seat inner belt over the convex areas of the front seat frame adjuster.**

- (b) Install the wire harness into the claw of the front seat cushion inner shield.



- (c) for Driver Side:

- (1) Install the 2 clamps and the 2 connectors.
- (2) Connect the seat position sensor connector.



- (d) for Front Passenger Side:

- (1) Install the clamp and the connector.
- (2) Connect the buckle switch connector.

### 2. INSTALL FRONT SEAT ASSEMBLY (See page [SE-24](#))

### 3. INSTALL FRONT SEAT TRACK COVER (See page [SE-25](#))

### 4. CONNECT CABLE TO NEGATIVE BATTERY TERMINAL

**Torque: 3.9 N\*m (40 kgf\*cm, 35 in.\*lbf)**

### 5. INSPECT SRS WARNING LIGHT (w/ Front Seat Side Airbag) (See page [RS-29](#))